

2018 ANNUAL REPORT



cartong

Humanitarian Mapping &
Information Management

This publication was produced by CartONG. Thank you to Jean-Guy Audéoud, Marie Beeckman, Cécile Borreil, Robert Danziger, Maeve de France, Sylvie de Laborderie, Sylvia Musula Mutsotso, Martin Noblecourt, Sandra Sudhoff, and Edmond Wach for their contribution. The report was designed by Nina-Flore Eissen.

August 2019

Cover image: MDC awareness raising session at Agence Française de Développement in December 2018, Paris, France. Photo taken by Claire Zanuso.

All images in the report: © CartONG (unless specified otherwise on the photo).

The icons used in this report are by mynamepong, freepik, and Dave Gandy and are available on www.flaticon.com

The map used page 6 is based on the map created by freepik.com



CONTENT

PRESIDENT'S MESSAGE

Page 3

ABOUT CARTONG

Our expertise - Page 4

Our governance - Page 5

Our team in 2018 - Page 5

Our presence in 2018 - Page 6

HIGHLIGHTS OF 2018

Page 7

OUR RESOURCES

Page 8

OUR ACTIVITIES IN 2018

Mapping and GIS strategy for MSF-CH - Page 9

Information Management for UNHCR - Page 12

IM strategic support for Tdh - Page 18

Data Collaborative project in DRC - Page 20

2018 GeOnG Forum - Page 22

Missing Maps project - Page 24

IM needs assessment for Solidarités International - Page 27

Educ'Aura: Objective 2030 project - Page 28

IM support for ACF France - Page 30

Maps from here & abroad: mapping for migrant populations - Page 31

GIS & MDC training for Bioforce & Emergency mapping for ACAPS - Page 32

GIS support for ICRC & MDC awareness-raising sessions for AFD - Page 33

2018 small projects - Page 34

FINANCIAL REPORT

Page 35

PERSPECTIVES FOR 2019

Page 37

ACKNOWLEDGMENTS

Page 39



PRESIDENT'S MESSAGE

2018 was a year of continuity for CartONG, in our ongoing projects and partnerships; and a year of novelty, with the launch of several innovative activities which, we hope, will allow us to develop new fields of activity in the future.

The assistance that we provided to our main partners (MSF and UNHCR) has now reached a mature stage, with the launch of a major initiative to scale up the GIS tools we support on the MSF-CH side, and the support of a new section within UNHCR. In 2018, we also continued working with several long-term partners and collaborations, such as Terre des hommes, Solidarités International and Missing Maps, who have all proven their positive impact.

At the same time, we have launched several projects facilitating digital mediation and aimed toward the general public, including the Maps from here & abroad project for migrant populations in France, and the Educ'Aura project on raising awareness about the Sustainable Development Goals (SDGs). Related to the latter, we have also implemented an innovative project to try to measure SDGs using crowdsourcing resources. These new activities have enabled us to fulfil our mission of supporting humanitarian and development actors not only from a purely operational point of view (in the field or at headquarters) but also by raising awareness about international aid and global issues, while exploring new forms of mapping - particularly around sensitive mapping methodologies.

This year also saw the organization of the 6th edition of the GeOnG conference, now a major event in the sector and which was once again a great success. It is a privilege for us

to welcome our partners and colleagues in order to pursue one of our main objectives: to improve the effectiveness of humanitarian and development actions.

CartONG also continued to grow stronger this year, with several recruitments and an in-depth work to improve our external communication, which is reflected in this new annual report format. In 2018, we also moved (yet again!) to more spacious premises in the center of Chambéry to increase our work efficiency and better accommodate our team, and to also welcome our volunteers and our partners in better conditions. Finally, and even if growth is not an objective in itself, we can outline the fact that our organization has passed the 1 million euros threshold for the first time in its history: this new financial foundation has allowed us to initiate the innovative projects mentioned above, and to also support small organizations with more limited resources.

2019 seems likely to be a promising year for CartONG, with the start of a collaborative undertaking to define an associative project that will allow us to contemplate the future with new eyes by integrating all the new activities we have explored in recent years.

We wish to conclude this report by thanking all of our partners and sponsors, who make our work possible, our staff and volunteer teams as well as our Board members who always give the best of themselves.

Charlotte Pierrat, President

Sybille Bernard & Vincent Taillandier,
Vice-presidents



ABOUT CARTONG

CartONG offers services to humanitarian and development organizations on all the technologies of information management, and particularly geographic information. We offer our partners state-of-the-art tools, and services while being always sensitive to the sustainability and cost-efficiency of the solutions.

Our activities:

- ⇒ Mapping, data collection in the field and digitizing
- ⇒ Research, compilation and curation of geographic data
- ⇒ Geo-servers, web-mapping and online data visualization tools
- ⇒ Data collection, in particular with mobile devices (smartphones/tablets)
- ⇒ Data analysis to support decision-making
- ⇒ Information management workflows and procedures
- ⇒ Visualization of data for reporting or communication
- ⇒ Analysis of spatial data and satellite imagery
- ⇒ Capacity building: training in GIS, mobile data collection, databases, data analysis
- ⇒ Creation of e-learning modules
- ⇒ Outreach on geographic information tools, awareness building inside the humanitarian community regarding adapted tools and procedures
- ⇒ Research and compilation of best practices on information management & mapping

OUR MAIN FIELDS OF EXPERTISE

Mapping & GIS

Using Geographic Information Systems to facilitate project implementation



Mobile Data Collection

Improving the quality of humanitarian data to conduct better impact evaluation

Information Management

Designing information management strategies for better decision-making



Capacity Building

Strengthening the skills of the humanitarian and development community



ABOUT CARTONG

OUR GOUVERNANCE

CartONG follows a standard French associative governance structure, with a Board elected by the yearly General Assembly.

Each of the members are elected for a period of one year – which is renewable. They carry out their duties as volunteers. Board members meet once per month.

The Board's role is to provide broad guidance for the association, to ensure its proper functioning and to guarantee the best possible use of resources.

It plays a key role in helping structure the association as it grows and continues to welcome new staff, members and volunteers.

The Board also provides great support to the CartONG team every 2 years during the GeOnG Forum, and provides expertise on volunteer projects.

2018 Board

Charlotte Pierrat, President

Founder & Director of AGAT

Vincent Taillandier, Vice-President

Strategic Development Consultant

Sybille Bernard, Vice-President

Audit Compliance Manager at CARE France

Johan Richer, Treasurer

Co-founder of Jailbreak

Claire Gillette, Secretary

Freelance Cartographer

Jean-Paul Nicoletti, HR Advisor

Former Economic Studies Officer at Arvalis

Robert Danziger, Board Member

Former Professor

Michel Bouillot, Board Member

Former GIS Specialist

OUR TEAM IN 2018



Photo of some of CartONG's staff & volunteers during the Get-Together of May 2018.



ABOUT CARTONG

A FEW FIGURES ABOUT OUR STAFF & VOLUNTEERS

Collaboration
between staff
& volunteers on
9 initiatives

64
members

18 staff

4 interns &
service
civiques
mentored

22 volunteers
helped during
the GeOnG

OUR PRESENCE IN 2018



In 2018, we conducted implementation & training missions in Afghanistan, Albania, Bangladesh (4), Burkina-Faso, Burundi, Cameroon (2), Congo, DRC (4), Ethiopia, Iraq, Jordan (2), Kyrgyzstan, Madagascar, Senegal (3), Sudan (2), and Uganda.



HIGHLIGHTS OF 2018

31st January – 1st February

Launch of the "Data Collaborative project to support Health and Water/Sanitation SDGs in Malawi and DRC" with a first workshop held in Kinshasa

February

CartONG gave a couple of GIS training courses for MSF in Brussels

18th – 21st March

Participation at the MERL Tech UK Conference in London

March

We carried out a 4-week mission in Madagascar as part of a disaster risk reduction project with the NGO Pompiers Humanitaires Français and the local OpenStreetMap community

March

4-week deployment in Bangladesh to design a long-term GIS infrastructure in the Kutupalong refugee camp in support of MSF France

March

CartONG started working with the DRS section of UNHCR (Division of Resilience and Solutions)

16th – 27th April

SurveyCTO training mission in Iraq for Terre des hommes

26th – 27th May

Get-together and General Assembly of CartONG in Dullin (France)

1st – 3rd June

Participation at State of the Map France

June

Launch of the new project "Maps from here & abroad" funded by Fondation de France

13th July

CartONG's team moved to a new HQ located in the center of Chambéry

July

CartONG published an article on "Fostering the use of good practices in information and communications technologies" in Alternatives Humanitaires (issue 8)

August

Launch of Educ'Aura, a project dedicated to raising awareness about SDGs

8th September

CartONG took part in the Rentrée des Associations in Chambéry

6th – 25th October

IM support mission in Afghanistan for Action Contre la Faim France

29th – 31st October

CartONG organized the 2018 GeOnG Forum in Chambéry, with 189 participants attending

10th – 11th November

CartONG co-facilitated for Tdh an IM workshop for M&E and IM staff in Jordan. 7 staff were trained, with a specific focus on improving their data analysis and data protection skills

6th – 21st December

iRHIS (Integrated Refugee Health Information System) roll-out mission in Burundi in support of our partner, UNHCR



OUR RESOURCES

As part of its mission to build capacity within the sector, CartONG produces a wide range of learning materials and studies each year. Here is a list of the blog posts available at: blog.cartong.org which were published based on the resources produced in 2018 as part of our projects and in support of our partners.

[Tutorial](#) – Solutions for publishing an interactive map from a QGIS project (French only)



[Tutorial](#) – All about regex() in xls form: when, how and examples in the humanitarian and development fields

[Tutorial](#) – ArcGIS advanced training on the Network Analyst tool



[Benchmarking](#) – Drone imagery: a comparison of 3 UAV post-treatment software

[Toolbox](#) – The English version of the ICT Toolbox for small NGOs is now available!



[Best practices](#) – Sharing of experiences and good practices on sensitive mapping (French only)

[Tutorial](#) – Mobile data collection: more quality, less cleaning!



[Tutorial](#) – The ODK checker dashboard: how to quickly check your form design!
By Noel O'Boyle from MEDAIR

[Tutorial](#) – Benchmarking on data collection tools for shelter tagging & items distribution



And also...



[Toolkit](#) – MDC Online Toolkit, co-created with Terre des hommes

[Article](#) – Fostering the use of good practices in information and communications technologies, Alternatives Humanitaires, issue 8



OUR ACTIVITIES

Mapping & GIS strategy for MSF-CH



24 staff

Budget of 556,000€

Global. Missions in Bangladesh, Uganda, Kyrgyzstan & Sénégal

About the partnership



The partnership with Médecins Sans Frontières-Suisse, which exists since 2013, remains one of the largest ones in terms of budget and volume of activities. Indeed, the MSF GIS Unit is continuously gaining momentum within the MSF movement.

Since the beginning, CartONG has been acting as technical partner for the project. 2018 was a pivotal year marked by the release of the Map Centre v2, the cornerstone of the GIS Unit 1.0 which, under the GEOMSF project, is gradually scaling up and turning into the GIS Unit 2.0 to be ready for wider demands as GIS literacy in MSF grows.

Mapping and Data Management

During this transition period, the main aim was to stabilize the unit, and to work on its foundations. The mapping team continued working on the country kits and further developing thematic maps related to the WASH and epidemiology sectors, while answering direct mapping requests, often related to emergencies. In 2018, a total of 280 maps were produced and we covered 3 major crisis for which we were activated in rush mode. With a decentralized user base in mind, the replica system used to commit data to the master database was improved and processes developed to allow any user trained on the system to submit data, regardless of where they are based.

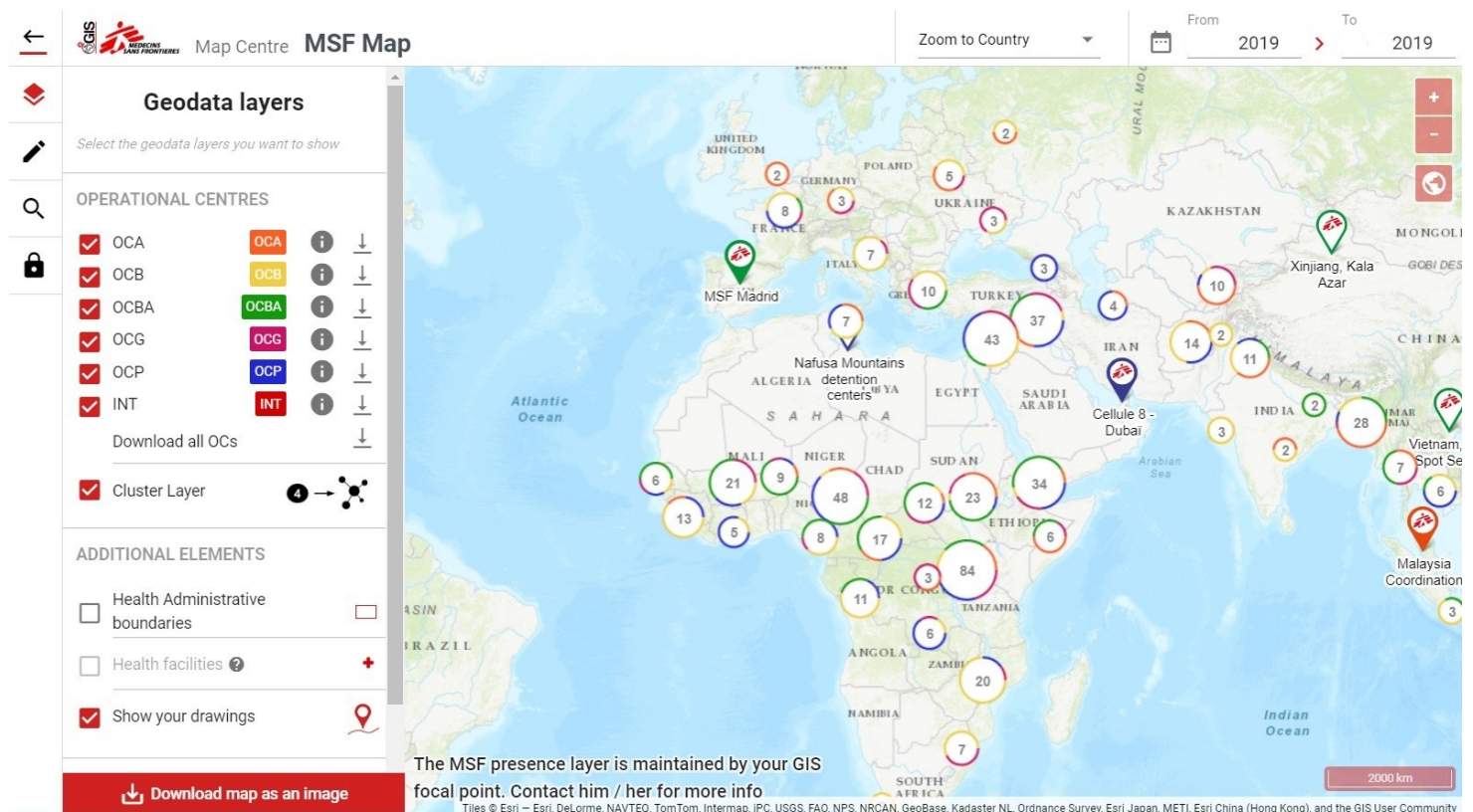
With the structuration of the reference databases, we are expanding the scope of the GIS platform by developing and implementing new tools and workflows, as well as building the first geographical and institutional layer of MSF presence in the world. This reference layer is visible on the Map Centre v2 and in the new MSF Map application.

Webdevelopment for MSF

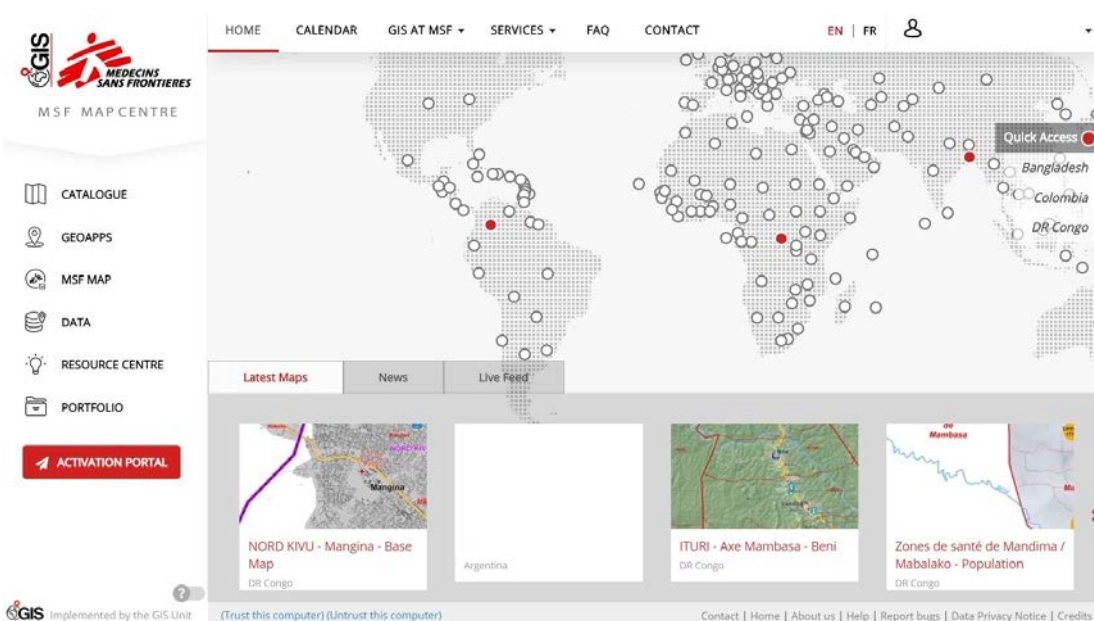
MSF Map is a web interface, where the user can first visualize where MSF works. Zooming into his/her project, the user can both edit data or draw information as is possible on Google Earth. The map can therefore be adjusted as the cartographic interface contains the MSF baseline and reference data. The tool is designed to be easily accessible by users, ergonomic and responsive in order to be compatible with the touchscreens used by MSF operational centers and emergency units, and during the MSF daily briefings (see first illustration onto next page).



OUR ACTIVITIES



This tool is part of the Map Centre v2 which has been re-developed for the last few years and was finally and successfully released at the end of 2018. The new Map Centre contains more contextual pages and also more useful tools for GIS and non GIS people. In addition to the search tool in the catalog of maps, the website allows staff to download data, find useful information (such as documentation) and offers the possibility to place a product request online and to follow its progress. Combining a request order with a complex user management system, this module took quite some energy to build!



Webdevelopment has grown at CartONG, thanks to this project and the geoapps that we continue to develop for the MSF GIS Unit have matured. In 2018, we created 7 new web applications on top of the 6 previous released ones that we have continued to maintain. To ensure we are defining and addressing the user needs efficiently, we also have

started to implement agile methodologies allowing us to optimize the development process.



OUR ACTIVITIES

Training, missions and field support

In 2018, we gave remote support to MSF teams deployed in emergency settings. In total, we supported 28 field missions covered by 16 GIS specialists for a total of 204 weeks. We also supported 15 local GIS specialists in the field to respond to disease outbreaks, to facilitate the implementation of WASH programs, to map refugee camps and we conducted a first mission to support environmental health activities.



Our training offer grew, and we re-organized the 4 one-week training sessions for GIS basic skills, MDC, GIS specialists and GIS focal points in 2018. We also organized the first GIS for WASH training as well as different short sessions on the topic of MDC or GIS. Being involved in more training workshops where we have the opportunity to integrate GIS modules, helps increase the awareness on GIS and related products and services within MSF. Last but not least, we also organized the second edition of the GIS Week – a full week where all members of the GIS Unit and all field GIS specialists at MSF meet to discuss and share good practices.

The GEOMSF project

Lastly, CartONG took an active part in the "GEOMSF project" which was validated during the first semester of 2017 and launched early 2018. The GEOMSF project aims at scaling up the services currently offered by the GIS Unit. CartONG is participating with 2 hats, one as the "client" of GEOMSF as part of the MSF GIS Unit, helping and supporting the needs definition, and one as "technical advisor" during the first phase of the project which focuses on analysis and the architecture definition in order to develop a common vision of the next platform, tools and processes for the GIS Unit.

7 webapps
developed &
6 maintained

Release of
the Map
Centre v2

280 maps
produced

140 people
trained on
GIS & MDC



OUR ACTIVITIES

IM support for UNHCR



32 staff

Budget of 316,000€

Global (all countries of operations of UNHCR)

About the partnership



CartONG has been providing support to UNHCR since its creation. In 2018, the partnership with UNHCR continued with two new sections (Livelihoods and Energy from the DRS unit), being supported together with FICSS (Field Information and Coordination Support Section) and PHS (Public Health Section). The overall budget increased by 50%. Whilst CartONG is supporting Information Management activities, products and tools in all four sections, the focus for each section is different.

FICSS section

32 staff for a budget of 106,000 €

No missions in 2018. Supported remotely: Bangladesh, Iraq, Mauritania, Syria, Turkey and Uganda

ArcGIS services, products and related infrastructure

Traditionally, CartONG is supporting ArcGIS services and infrastructure related aspects linked to research and analysis. In 2018 the following areas were covered:

- ⇒ Whilst the database used on the server is a PostgreSQL database, support towards Microsoft SQL Server Express databases was maintained and in order to overcome limitations, the replicas have been made lighter. The database schema was further analyzed and adjusted.
- ⇒ An assessment on ArcGIS Enterprise and ArcGIS Online and the ways they were used was undertaken. As a result, a proposal was made to use Online for prototyping and for sharing with the large public while the final versions should rather be stored on ArcGIS Enterprise. In 2019, this will have to be assessed further in the context of eSites Project.

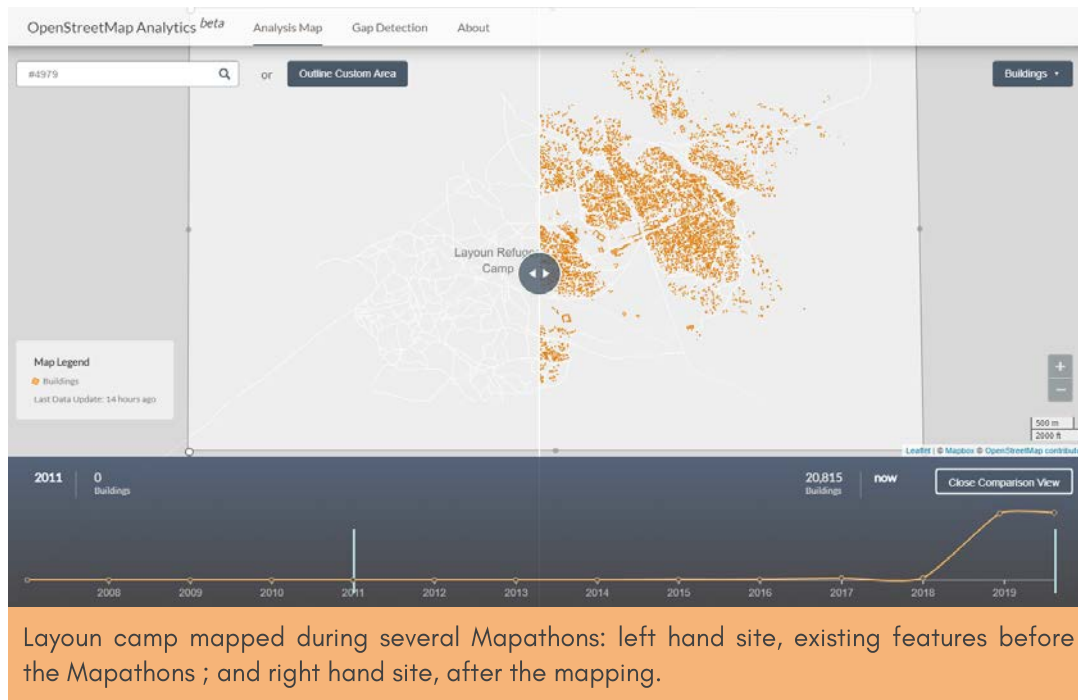
Site Mapping

In 2018, the [Site Mapping Application](#) has seen improvements oriented towards three main objectives. Firstly, the application went through an in-depth review of its user interface and design, aiming for a simpler and better user experience, as well as reaching full compliance with UNHCR Graphical Chart. Secondly, functionalities focusing on analysis and download of UNHCR's own data were upgraded and matured. Constant debugging and improved quality control were implemented all throughout the year. The application was also set up to further integrate OpenStreetMap data.

For the integration of OSM data, a pilot project focused on five refugee camps in Uganda was conducted to assess the best ways of integrating OSM data into the UNHCR DB; and an additional project focused on importing UNHCR data into OSM. The import was documented in a [Wiki](#).



OUR ACTIVITIES



Numerous minor functional improvements were brought in to provide a more intuitive experience to users: they include improved zoom behaviors, site coordinates display, and a renewed Search bar allowing keywords, auto completion and fuzzy search tolerance. These subtle modifications all contribute to the World View main function: provide an overview of Site Mapping overall situation in UNHCR and facilitating

direct access to any specific People of Concerns' site for more detailed viewing and analysis. While undergoing the same UX/UI enhancements as the World View, the Site View Mode of the applications was set up with improved download functionalities, enabling users to use FICSS GIS data directly on their computers.

CCCM IM Support including Web Maps

Following the work of previous years for the CCCM Cluster (Camp Coordination, Camp Management), the ISMI (IDP Situation Monitoring Initiative) tracking dashboard was further enhanced and a new OPSMAP was developed in support of the ISIMM (IDP Sites Integrated Monitoring Matrix) project, both for North-West Syria context. ISMI dashboard has been remarkably improved after the first version delivered in 2017. This tool visualizes the Internally Displaced People (IDP) movement data collected by the cluster, who is responsible for updating the data through CKAN platform. It now includes animated movement layer, filter options through dynamic charts and data exports. The data is however not publicly accessible.

[ISIMM OPSMAP](#) was deployed in 2018. Similarly to ISMI, and as a new feature in relation to older OPSMAPs, this version is connected to a CKAN platform, which allows the data owners to update it easily without requesting web developers. CSV and PDF exports are also available.

We also produced a couple of benchmarkings for FICSS in 2018 that were later published on the CartoBlog, check out our Resources section to learn more.

12 mapathons
organized in
support of
UNHCR

OSM data
integration
for 5 camps

15 online
documentation
produced

7 map
portals
& geoapps
worked on



OUR ACTIVITIES

PHS section

29 staff for a budget of 119,000 €

In-country support: Bangladesh, Burkina Faso, Burundi, Cameroon, Ethiopia, Republic of Congo, Sudan, and Uganda

Remote support: Algeria, Bangladesh, Burkina Faso, Burundi, Cameroon, Djibouti, DRC, Ethiopia, Egypt, Kenya, Niger, Republic of Congo, Rwanda, South Sudan, Sudan, Tanzania, and Uganda

In 2018, CartONG supported the Public Health, Nutrition as well as WASH teams on various Information Management tools, products and processes. A few of those are highlighted here:

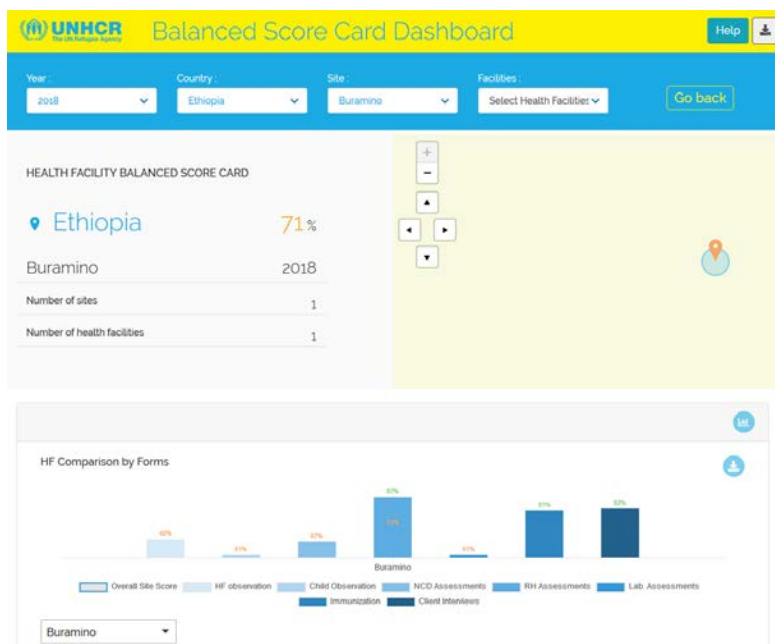
SENS (Standardized Expanded Nutrition Survey)

In 2018, we were focusing on modifications to the global forms, as well as exploring the way the standardization exercise – where the teams get trained on measuring children – can be made more effective by using MDC. For the new version an Excel tool was built which gets the results in the right order and format through a button and with fewer steps involved. The initial idea for the SENS V3 was to have all household related forms in one, however, after testing this in a pilot in Ethiopia, this idea was abandoned as using the data for analysis became more difficult. Consequently, the household module (demography) is separate and can either be administered with a mortality part or without. The other modules, WASH, Mosquito Net, and Food Security are grouped in a different questionnaire, allowing more flexibility for the surveyors. The child questionnaire was enhanced as well: CartONG used elements of a form developed by UNICEF/CDC which performs additional crosschecks on the anthropometry values embedded, as it is not only checking the general range but also the range within an age and gender group and flags if a value is outside of the accepted range for the respective groups.

Balanced Score Card for Health Facilities

Whilst the work on the new forms started already in 2017, in 2018 the user feedback from the pilot was incorporated and registering the facilities through a bar code was implemented. The data entry checks were improved in 2018 and a workflow on updating the locations list (in an external csv) was put in place. CartONG also updated the existing BSC documentation and prepared and held a webinar together with the PH team. The scoring results are available publicly through the dashboard, it is aggregated up to country level, however the user can also drill down to the individual health facility level and download a pdf report from the [dashboard](#).

The tool comes with several filter options in terms of years and locations and already includes some additional graphs which are being fine-tuned in Q1 2019.



Medical Referral Database

The medical referral database is a standalone Access database for Health practitioners to record the



OUR ACTIVITIES

details of a patient's referral. In 2018, emphasis was on implementing more graphs and making the import and export function more stable as well as improving the data validation and the Search functions. Also the referring entities can now easily be managed as well as migrated by the focal point. A webinar was held to present the new features which was well received and triggered requests to upgrade country databases and migrate existing databases. A total of around 37400 patients as well as 60200 referrals have been migrated into the dedicated master databases set up for the respective operations, each country database by now has a dedicated Password system. However, keeping all those standalone databases up to date will remain a challenge which is why UNHCR is planning to move to a cloud based system.

iRHIS: integrated Refugee Health Information System

[iRHIS](#) is an open source tablet and web platform that was developed by GNUCOOP to allow health workers to electronically register and track the health status of refugees in camps, as well as guide UNHCR public health and implementing partners to rapidly detect public health problems and epidemics. CartONG developed two comprehensive training guides tailored to the different diverse health staff profiles comprising of data collectors and supervisors. Three in-country training were conducted on the use of the iRHIS platform for patients individual consultation data collection, online data synchronization to generate reports and use of the automatic analysis dashboards. The work will continue in 2019 focusing on different training formats including webinars and E-Learning as well as more user testing and complementing the existing training material in English and French.

Support to the WASH team

CartONG has been supporting the WASH team since 2015 for the large-scale deployment of an annually-run Knowledge, Attitudes, Practices survey in 180 refugee camp. In 2018, 4 in-country trainings of survey managers or implementation missions occurred (Burkina Faso, Uganda, Sudan and Bangladesh), as well as interventions both at the WASH HCR global week and partner day. The [tools and documentation](#) were also improved, with the possibility of comparing the WASH core indicators for a given place over time and the production of four key manuals in French and English corresponding to the key phases of a KAP implementation. Large scale remote mapping by Missing Maps volunteers also occurred, of 6 refugee camps in 4 different countries (Mentao in Burkina Faso, Kiryandongo in Uganda, Al Alagaya in Sudan, Layoun, Ausserd and Smara in Algeria) to improve the analysis of Water and Sanitation needs in the field. In 2018, we also worked on the [WASH borehole GIS portal](#) - a tool set up and maintained by CartONG, which is the public UNHCR database on boreholes - by adding the possibility for the authorized user of bulk uploading new or updated boreholes him/herself.

Last but not least, we also produced a couple of tutorials for PHS in 2018 that were later published on the CartoBlog, check out our Resources section to learn more.

1 geoapp
created

43 databases
migrated & 43
master database
created

310 staff
trained
across
projects

78,000
shelters &
buildings
mapped



OUR ACTIVITIES

DRS section

21 staff for a budget of 91,000 €

In-country support: Cameroon and Sudan

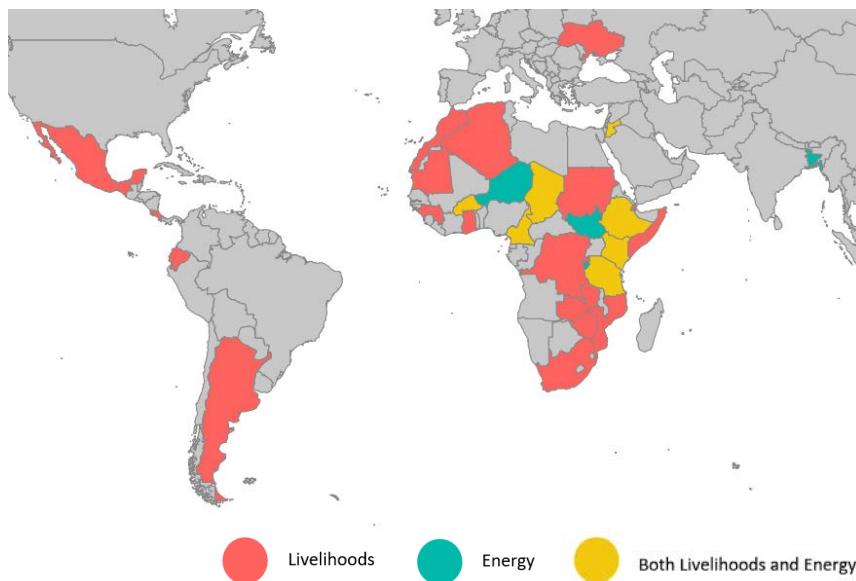
Remote support: Algeria, Argentina, Bangladesh, Burkina-Faso, Burundi, Cameroon, Chad, Costa Rica, DRC, Djibouti, Ecuador, Ethiopia, Ghana, Guinea, Jordan, Kenya, Mauritania, Mexico, Morocco, Mozambique, Niger, Rwanda, Somalia, South Africa, South Sudan, Sudan, Tanzania, Ukraine, Zambia & Zimbabwe

The Division of Resilience and Solutions (DRS) of UNHCR has undertaken a comprehensive revision of the framework for monitoring UNHCR Energy and Livelihoods programs on a global level. DRS developed mobile data collection tools which are scalable and a monitoring system that helps implement both Livelihoods and Energy activities across operations. The monitoring system is a system that allows data flow integration linking the data collected by UNHCR operations on [KoboToolbox](#) to a centralized online interactive spreadsheet for analysis and data validation before finally publishing to the program's [Livelihoods](#) and [Energy](#) Open data platforms.

Since March 2018, CartONG has been providing timely technical guidance and support to the UNHCR field operations through the following activities:

Technical guidance and training

Throughout 2018, technical support and training to the field operations focal points in the usage of the Livelihoods and Energy monitoring tools, setting up mobile data collection and verifying data submissions were provided. Remote training through webinars and personalized follow-up calls were provided to 34 operations for Livelihood and 9 operations for Energy on the use of mobile technology to monitor Livelihood and Energy Programs respectively.



Technical review of Smartphones for local procurement

Technical review and clearance of the proposals of smartphones and accessories to be used for Livelihoods and Energy Monitoring were submitted by the field operations for UNHCR HQ budgetary support. A Smartphone technical specifications guidance comparison matrix was developed, shared and used by operations to procure mobile devices across 18 countries.

Review of existing procedures and tools, updating of training materials and surveys

We transformed the existing training materials into user-friendly manuals for operations. In ensuring a high quality of responses and comprehension of the Livelihoods and Energy surveys by field operations, UNHCR focal points and partners, we transformed the monitoring tools to multilingual tools by adding English, Spanish, and French to reflect the diversity of the languages used in various UNHCR operations. We also made these accessible through both the [Livelihoods](#) and [Energy](#) Open Data platform.



OUR ACTIVITIES

LIVELIHOODS COUNTRY ANALYSIS NOTE

CAMEROON 2018

(Multiple PPGs) Central African refugees in the East and Adamaoua, Nigerian refugees in the Far North, Refugees and asylum seekers in urban areas



12/19/2018

1. LIVELIHOODS PROGRAMME AND MONITORING SCOPE

Problem Statement:

In 2018 some 340,000 Central African, Nigerian and urban refugees with various nationalities, who have been arriving since 2004, are currently hosted by Cameroon. The surrounding local population is estimated at 8,340,000 individuals. The 2017 Age, Gender, Diversity Participatory Assessment with refugees, conducted in all major hosting sites as part of the standard planning process, has identified a lack of capital to start small projects, restrictions to the right of freedom of movement and limited access to arable lands as the main problems faced by the Central African refugees. Furthermore, Nigerians refugees have reported inaccessibility to cultivable land and insufficiency in income generating activities as the main problems that they are facing. Finally, urban refugees have identified a lack in work and access to credit as their main problems.

To inform an evidence based program design, a set of livelihoods related assessments have been conducted during 2013-17 including a socio-economic assessment for refugee households, a market research and a value chain analysis in all refugee hosting sites. The assessments have identified key livelihoods challenges to improving crop and livestock production and local small commerce of Central African and Nigerian refugees, including restrictions to refugees' right of freedom of movement out of the camp, limiting their interaction with the markets and the surrounding villages. Furthermore, the key livelihoods challenges faced by urban refugees have included a low level of professional qualification, limited access to information on existing professional opportunities in the community and a low capital for small businesses. As a result, the assessments have suggested the main livelihoods activities to be supported should include crop agriculture, training, small commerce and empowerment activities.

As a result of the participatory and technical assessments outlined above, the Livelihoods Strategy for Central African, Nigerian and urban refugees in Cameroon (2018-20) aims to provide the necessary conditions for refugees to reduce their dependence on humanitarian aid in a sustainable and significant manner by 1) developing an institutional and community environment conducive to the economic inclusion of target populations, 2) developing agro-pastoral and fisheries activities following a value chain approach, entrepreneurial opportunities, self-employment and decent jobs, and 3) promoting the protection of the environment with regard to all the anthropogenic productive activities developed within the framework of the various interventions.

Context:		Programs Monitored:	
Total number of Livelihoods Partner(s)	3	Number of Partners Monitored	3
Total Livelihoods Budget (USD)	1,291,218	Partner Budget (USD)	1,291,218
Number of Sites Targeted	16	Number of Sites Surveyed	15
Total Population of Forcibly Displaced	340,000	Number of Forcibly Displaced Targeted	5,571
Total Estimated Host Population	8,340,504	Number of Host Beneficiaries Targeted	2,204
Right to Own Land	No	Output 1 budget: Agriculture	739,956
Right to Work	Yes	Output 2 budget: Self-Employment	531,262
Right to Access Formal Financial Services	Yes	Output 3 budget: Wage-Employment	20,000

Note: Total Livelihoods Budget includes Capex (CA) for UNHCR and partners under livelihoods objectives.

Support on data quality check, analysis and reporting

Once the data is submitted by the participating operation, we continue to monitor data submission progress, while verifying, cleaning and exporting data on a daily basis for each operation to the open data platform. A total of 31 Livelihoods and 6 Energy Country Analysis Notes (a report summarizing each operations project background and results of key impact indicators) were uploaded to their respective Open Data platform.

Administration of open data platform

We also have administered and maintained both the [Livelihoods](#) and [Energy](#) open data platform to ensure real-time information on global indicators, and country profiles and training resources are up to date and easily

accessible. In addition, user-centric testing during the development of both the Energy and Livelihoods Open Data platforms was conducted and feedback on the user testing with appropriate recommendations provided to developers before the launch of both websites.

Data quality assessment of the open data platform

We conducted a data quality assessment to verify the accuracy of the data values calculated and displayed on both Livelihoods and Energy Open data platforms, recommendations were provided to the platform's developers to fix discrepancies identified.

Evaluation of system robustness and scaling capacity

We carried out a technical evaluation of the Livelihoods monitoring system, highlighted the limitations related to its functionality and provided recommendations from the findings. As part of implementing the recommendations, a comprehensive Livelihoods monitoring system developer's documentation was set-up, using [Sphinx](#) – a technical documentation tool (documentation of the Energy monitoring system was later done in 2019). This setup has immensely improved the quality of the system's code and made the documentation process truly agile. We are now able to keep track of all aspects of the system, have collaborative edits between the project's developers and maintain all the systems code in version control.

26 remote
training
sessions

3 in-country
workshops

45
operations
supported

37 Country
Analysis
Notes
produced



OUR ACTIVITIES

IM strategic support for Tdh



17 staff & 8 volunteers

Budget of 48,000€

Global (all countries of operations of Tdh)

About the partnership

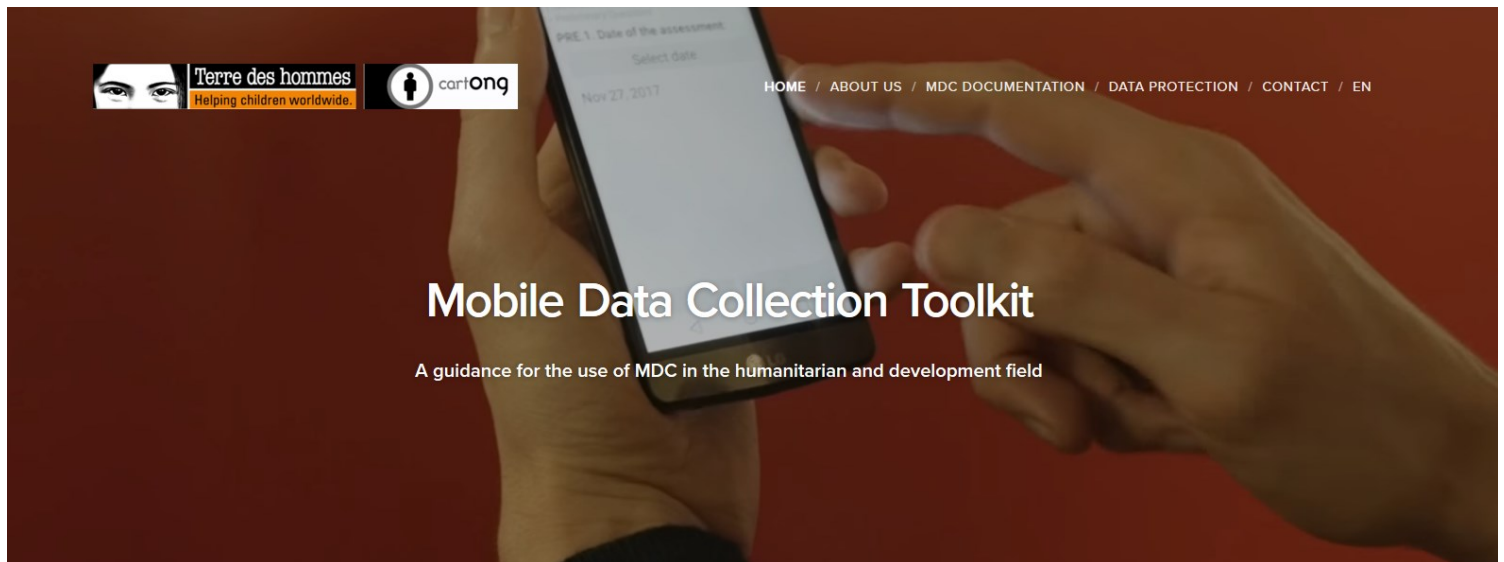


Terre des hommes
Helping children worldwide.

The large scale partnership with Terre des hommes has been ongoing since 2015. CartONG is Tdh's [implementing partner](#) on information management & Mobile Data Collection implementation (tools & methodology), capacity building (training workshops in the field and in HQ, documentation, support hotline, etc.), and knowledge building (needs analysis, benchmarking of solutions, etc.), and also supports its strategic organizational or technical recruitment decisions.

Release of the MDC Toolkit

CartONG staff and volunteers have been working with Tdh to compile documentation on Mobile Data Collection and, more generally, Information Management (on data collection, processing, cleaning and analysis), to help field teams be more effective in their information management practices. Since January 2018, the documentation produced has progressively been made public to help other organizations that might find it useful on the [MDC Toolkit website](#), including a [data visualization toolkit available here](#).



Training & hotline support

Beyond this, CartONG deployed numerous times to Terre des hommes delegations to give training workshops and help with the general capacity building of national and international staff in the field on information management, mobile data collection and geographical information systems – in 2018, 22 people from field operations were trained from 10 different countries through one regional MDC training



OUR ACTIVITIES

(Eastern Europe), one regional Information Management workshop (MENA), and a two-week training to the Iraq Monitoring & Evaluation teams.



A remote support hotline for all Tdh delegations is also operational (and has been since 2016) so that any staff can ask for remote support from CartONG on mobile data collection (encoding issues, choice of tools, validation of a form before deployment, etc.). A HQ hotline is also available for some technical support and wider organizational strategy discussions on Information Management.

CartONG also helped build the new version of the [FACET mobile data collection and analysis tools](#), based on a review of the needs and also an update of the key JMP indicators on which the tools are based.



"The trainer was well professionalized on the subject, I loved her facilitation and approach. She had all the dedication and time respect needed for the job! It was really an enjoyable workshop."

Feedback from a participant to the MENA regional workshop

63 hotline
activations

80 documents
either created,
updated or
translated on the
MDC Toolkit

22 staff
trained



OUR ACTIVITIES

Data Collaborative project in DRC



4 staff

Budget of 52,000€

DRC & Malawi



**Global
Partnership
for Sustainable
Development Data**

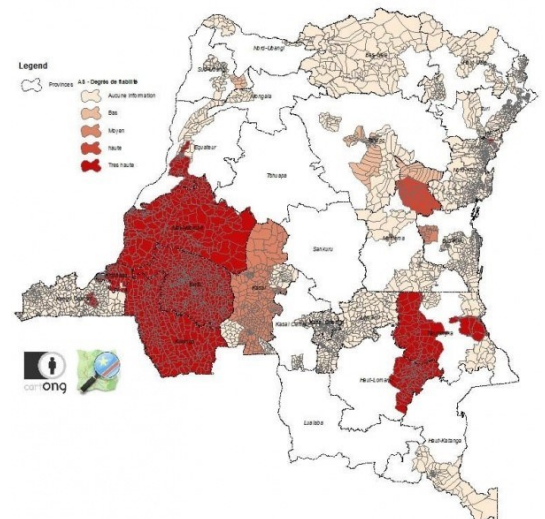
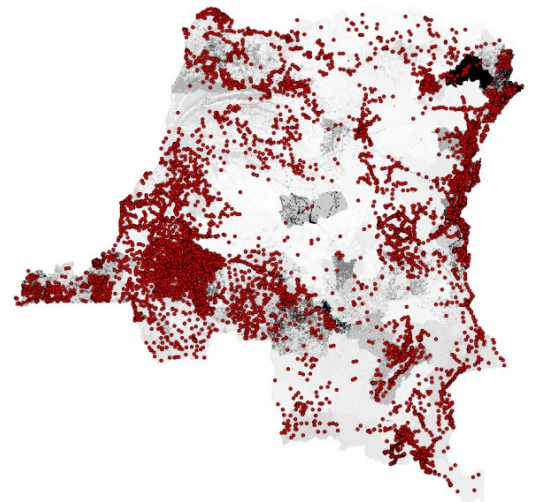
Funded by the Global Partnership for Sustainable Development Data (GPSDD, under the UN Foundation), and led by [510/Netherland Red Cross](#), this project was implemented in 2018 in two countries: in Malawi (by 510) on WASH data, and in DRC (by CartONG) on health data, in partnership with [OpenStreetMap DRC](#).

The goal of this project was rather simple i.e. to improve – thanks to crowdsourcing – the measurement, and, more specifically, the localization of SDG 3.8 "Achieve universal health coverage, including financial risk protection, access to quality essential health-care services and access to safe, effective, quality and affordable essential medicines and vaccines for all"; and, more precisely, its first target indicator on the coverage of essential health services. After reviewing the existing reporting on SDGs that was available in DRC, we decided in the end to focus on 2 indicators i.e. the percentage of population covered by basic and advanced health services.

To improve the measurement of these indicators, we started by assembling the existing data with all local stakeholders and assessing its quality. To do so, we defined an action plan (via 2 workshops in January and July 2018) that revealed a priority need to improve baseline data, including:

- ⇒ supporting the local stakeholders in sharing health data, by relaunching and facilitating the *Référentiel Géographique Commun's* health group and communicating regularly to other institutional actors;
- ⇒ a vast effort to gather all existing data on health areas and health sites that various organizations (NGOs, universities, UN agencies, etc. coordinating with the project GRID3) had collected over the years: more than 12,300 health sites (7,000 geo-located) and 5,300 health areas (on an estimated total of around 9,000), and qualify its reliability (see maps);
- ⇒ building/updating the RGC data model to match the attributes in OSM (building on the work already done by [Healthsites.io](#)), and a health areas delimitation methodology.

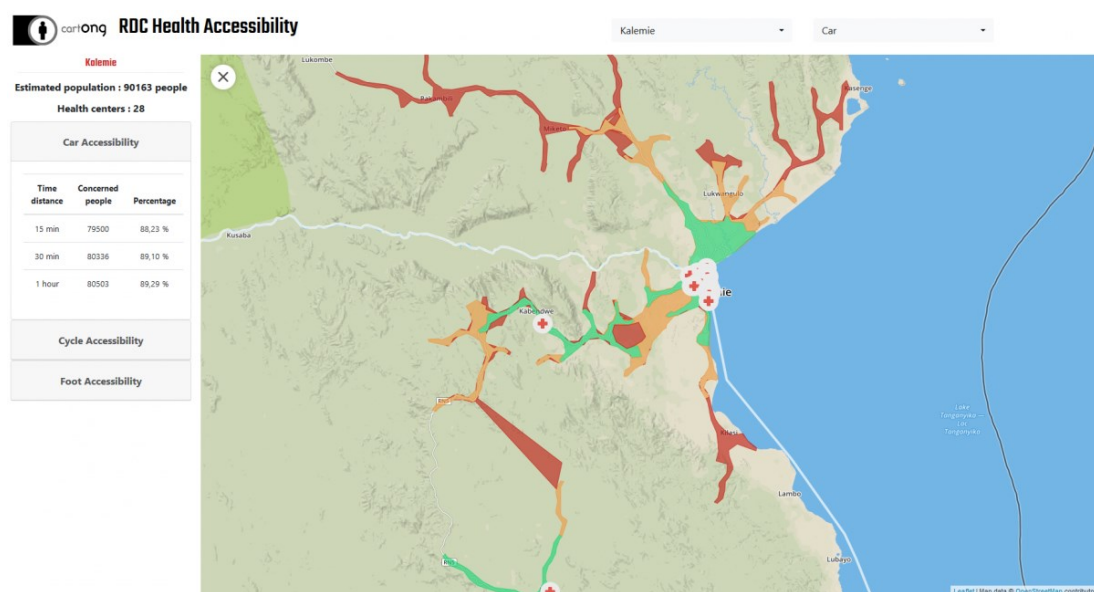
With OSM-DRC, we then organized two field missions (in partnership with the Intercluster and the Ministry of Health) to test the possibility of conducting quality data collection on both health sites and health areas boundaries.



OUR ACTIVITIES

These two missions helped confirm the following challenges:

- ⇒ The limited quality of existing data (if any was available at all) and the challenges associated with data collection in general, which jeopardize data collection of health indicators in the country as a whole, including for SDGs.
- ⇒ The accuracy of the methodology used for health areas delineation, based on direct feedback from the local "infirmiers titulaires" (head nurses from a health area) for a reduced cost and time invested.
- ⇒ The readiness of the data model for health sites, with 50 health sites enumerated and directly uploaded in OSM and usable for analysis.
- ⇒ Providing local teams with tools or equipment is not enough if no long-term back-up is provided to them, both in terms of technical help but also of financial support. However, the collaboration has proved very successful, in particular with the local MoH teams.



The data collected during the mission then allowed to build several products analyzing the accessibility of health centers including paper maps and a [prototype dashboard](#). This project allowed us & 510.global to highlight several key learnings for collaboration around data (i.e. the importance of standards and quality methods, of multi-

stakeholders' engagement, of accessible tools, the need to localize SDGs and to find concrete outputs for data). This time-bound contribution is a contribution to a larger effort to help all actors improve the services provided to the Congolese people by giving them access to better data.

1 dashboard
based on
OSM data

2 workshops
with local
stakeholders

Collaboration
between 2
actors



OUR ACTIVITIES

2018 GeOnG Forum



27 staff & 23 volunteers

Budget of 36,000€

Chambéry (France)



CartONG hosted the sixth edition of the GeOnG Forum in Chambéry, from October 29th to 31st, 2018. This year, the central theme of the conference was: 'Perfection' versus 'Good enough' in Information Management, *Adjusting to context, scale, phase & funding.*

The 2018 GeOnG was a great edition of the Humanitarian Data Forum. For the first time ever, we welcomed 189 participants coming from more than 90 organizations, over the course of 3 days; and cherry on the cake: 95.2% of the participants were satisfied with the contents and organization of the forum.

As part of the program in the first two days, we organized 8 roundtables on a large range of topics (data protection, Information Management strategies in consortiums, the user centric design of tools in the humanitarian sector, etc.), and a speed-geeking session with 10 presenters. We also had a total of 15 one-and-half hour workshops and 6 lightning talks. Simon Johnson from the British Red Cross, also gave a presentation on "Using the Humanitarian Exchange Language (HXL) to create fast data flows and visualizations", which was very well-received by the audience. That same day, we hosted a sensitive mapping workshop and a conference-debate on the measure of SDGs in the evening (see the *Educ'Aura project* section).



The third day was dedicated to longer hands-on workshops of two-and-half hour - with presenters from Medair, Oxfam, GAHI, Kathmandu Living Labs, AFD and OGPToolbox to name a few - and which proved very popular amongst the participants.

A few novelties this year included the organization of a collaborative evening event hosted by our Diamond sponsor, the French Development Agency (AFD), on bridging the information gap between the emergency and development sectors. For the first time, we also organized a Fail Fest and a stand-up debate during the plenary session on the theme of "Perfection vs. Good Enough", with the much appreciated participation of Sonia Karkare,



GEOMSF Program Manager at MSF, and of Lars Peter Nissen, Director of ACAPS.



OUR ACTIVITIES

On the second day, we also had the pleasure of hosting Laura Walker McDonald, former Director of Innovation at GAHI (who now works at DIAL) for a brief plenary session on "Scaling up of Humanitarian Tools" – which was also a first for the GeOnG forum!

If you have missed the event, the presentations and videos are published [on our website](#) and you can also check our [recap video](#)!



We are now looking forward to the next edition in 2020, and are cordially inviting our partners and any organizations that may be interested to get in touch with us at: geonge@cartong.org

"The GeOnG is really a great opportunity to share experiences and to meet between actors of the sector."
Feedback from a participant submitted through the online survey

50 different
session
topics

189
participants

3 evening
events

More coffees
than we can
count!

Thank you to our sponsors!

Thank you to the 2018 GeOnG sponsors, in particular our Diamond sponsor: the French Development Agency (AFD), our two Platinum sponsors: ESRI and Novel-T, and our Gold sponsor: Gnucoop.

We also would like to thank our Silver sponsors: Aptivate, CamptoCamp, the CYBIS project, Dharma, Geo212, Magellium, mangologic, Mapbox, Picterra, RSM Audit Savoie Conseil, Geodesk and Ville de Chambéry. [Learn more about the 2018 GeOnG sponsors on our website.](#)



OUR ACTIVITIES

Missing Maps project



5 staff

Budget of 29,000€

France & Global



CartONG's activities as part of the Missing Maps project – which we have been implementing since 2016 – focused on three pillars this year: first, finalizing our Disasters Risk Reduction project in Madagascar; second, start various new projects supporting small NGOs; third, a large effort of documentation to strengthen our volunteer team.

DRR project in Madagascar

The Disaster Risk Reduction project conducted in Eastern Madagascar (Atsinanana region) in partnership with the French NGO Pompiers Humanitaires Français (PHF) became operational thanks to support from CNES (French Space Agency). The objective was to provide maps to local volunteer firefighters (supported by PHF) who work on prevention, awareness raising and assistance & reconstruction, but have difficulties to deploy in rural areas due to a lack of information, in particular geographic data.

We started by organizing several mapathons between October 2017 and February 2018 to prepare the OSM base map, mapping (and validating) 60,000 buildings and 3,000 kilometers of roads and paths. The 5-week mission in the field was conducted in March by a combined CartONG & OSM-Mg team and allowed, despite the disturbance of tropical storm Eliakim, to collect the planned data. The mission also allowed awareness raising among local stakeholders (NGOs, local authorities) on open data and collaborative mapping, in particular thanks to a data sharing workshop organized in Antananarivo.

The mission was rich in learning, in particular noting the considerable lack of data collection tools and base-maps for local actors, but also because it was one of the first missions organized in full autonomy by CartONG. We hope this first phase will be followed by a second one to go deeper in the use of the data produced, and will publish a complete atlas next year based on this mission and continue the exchanges with OSM-Mg for potential new joint activities.



OUR ACTIVITIES

Other Missing Maps initiatives in 2018

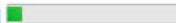
In parallel to this project, we started several initiatives with small grassroots NGOs, in order to provide them with the basic mapping tools they need:

- ⇒ With the French NGO Karya, which accompanies various local development projects in Nepal, supporting their volunteer missions with mapathons & training;
- ⇒ With the Rombo Conservancy organization in Kenya, mapping a natural reservation to support a project of protection of the fauna;
- ⇒ With the Burkinabè NGO Yaam Solidarité, starting a project of mapping informal neighborhoods for urban renewal projects that should lead to a mission next year;
- ⇒ With the "Conseil départemental" local authority of Savoie where we are based, on a project to support their cooperation with Dessalines in Haiti;
- ⇒ We also started two projects in Equator, in the Guano district to support housing renovation projects lead by the NGO Ecosur, and in the Portoviejo town where we mapped the natural spaces to help support risk prevention.

Finally, we undertook in 2018 a major effort to strengthen our internal resources, in particular for the quality control (validation) of our projects done by CartONG's volunteers, with two regular weekly sessions organized remotely, and a complete training package under finalization. Our volunteers also continued the development of our [mapathon dashboard](#).

#5636 Kalémie - Cartographie de base sanitaire

Done  65%

Validated  8%

Last update (11:10:18)

Map



Roads

Display roads on the map ☒

46 road(s) created (39.1 km)



Buildings

Display buildings on the map ☒

50 building(s) created

Landuse

Display landuse on the map ☒

Residential landuse: 0 km²

Total landuse: 0 km²

Waterways

Display waterways on the map ☒

2 waterway(s) created (13.2 km)



OUR ACTIVITIES

Comparatively to previous years, CartONG led relatively less activities under the "Missing Maps" umbrella in 2018, also because our approach to promote OpenStreetMap within our other projects started to come to fruition (see in particular, sections on the partnership with UNHCR FICSS, the GPSDD project, and the Map from here & abroad project; we also organized mapathons for areas of interest of Terre des Hommes, Solidarités International, MSF and Handicap International), demonstrating the success of our holistic approach towards this open platform.

And as usual, we also participated in several awareness-raising and educational projects around OSM this year, including Educ'OSM and the French State of the Map conference, the 2018 OSM Geoweb, the 2018 Night of Geography, and the Geneva Health Forum to name a few.

58
mapathons

1272
participants

13
countries

55 projects on
the Tasking
Manager

The Missing Maps project is implemented by CartONG with the support of the French
Service civique agency



Thank you to our Missing Maps sponsors!



OUR ACTIVITIES

IM needs assessment



3 staff

Budget of 19,000€

Remote and mission in Jordan & Bangladesh



CartONG has been providing support to Solidarités International since 2007, firstly on a one-off basis, and then more regularly since 2014. In 2018, the support provided to Solidarités International was centered around challenging Information Management (IM) needs assessment missions. CartONG evaluated the IM policies, processes, practices and tools implemented by the Solidarités International's teams in response to the Rohingya crisis in Bangladesh as well as the Syrian crisis.

For these rapid assessments of information management needs, CartONG interviewed the key players to evaluate their expectations, fears and difficulties, and reviewed the existing documentation and processes in place for the IM tools used by the local Solidarités' teams as well as the available IM products. As part of these missions, we also facilitated workshops and conducted a review of the key existing project documents to identify the IM needs per activity and the potential constraints related to donor requirements.

The deliverables of these two needs assessments missions were a report and a list of recommendations and suggested priorities. The support provided by CartONG in the Middle East had the particularity of taking place following the launch of a new consortium (therefore still in its infancy), and was thus mostly focused on strategic aspects; whereas the mission in Bangladesh was an opportunity to identify the capacity-building needs of the local IM team which then led to a two-week training mission on various topics such as MDC, mapping and data protection.



Finally, we also produced a map of Solidarités International's water points in Kaga-Bandoro, Central African Republic.

12 days of
training

3 missions
in 2018

1 water
points map
created



OUR ACTIVITIES

Educ'Aura: objective 2030 project



3 staff
Budget of 14,000€
France



CartONG and its partner [Les Petits Débrouillards](#) obtained funding from the Frame, Voice, Report! program of the European Commission in July 2018 to implement a project dedicated to raising awareness about the Sustainable Development Goals (SDGs) for a year in the Auvergne-Rhône-Alpes region.

The "Educ'AuRA, objective 2030" project aims to contribute to the dissemination and understanding of the SDGs at the regional level. To this end, 4 workshops for children were organized in 2018 around various topics (i.e. concepts of diversity, gender, cultural exchanges, access to education, ecological transitions, sustainable food consumption, etc.) as well as a meeting with the NGO Triangle Génération Humanitaire to learn more about the SDG 2 "Zero Hunger".

In addition to these activities, awareness-raising events during international solidarity days or public events were organized. For instance, as part of the GeOnG - an international forum on Information Management organized every 2 years by CartONG - we designed a workshop called "Maps of the future" during which the general public expressed their vision of our world in 2050 in terms of access to water and sanitation, cities of the future, etc. by drawing collective maps. We also participated in festivals (Festival des Solidarités in November, Festival Migrant' Scène in December) during which we implemented various awareness-raising activities such as mapping exhibitions questioning migration stereotypes, and a conference-debate about SDG 6 "Clean Water and



OUR ACTIVITIES

and Sanitation" took place throughout 2018. Last but not least, CartONG organized 2 mapathons, or participative mapping workshops, in order to inform participants – by using cartography – about the types of concrete actions that are being implemented at the local level by NGOs, institutional actors or associations in favor of SDGs.

Many other activities will be implemented in 2019 such as the design and implementation of games for children raising awareness about the unequal access to water and sanitation and education worldwide, but also the production of interview videos of members of local NGOs supporting the implementation of SDGs at the local level in the Auvergne-Rhone-Alpes region.



2
festivals

4 activities
designed for
young
audience

2
mapathons

1
conference

Thank you to our Educ'Aura donors!



OUR ACTIVITIES

IM support for ACF France



4 staff

Budget of 11,000€

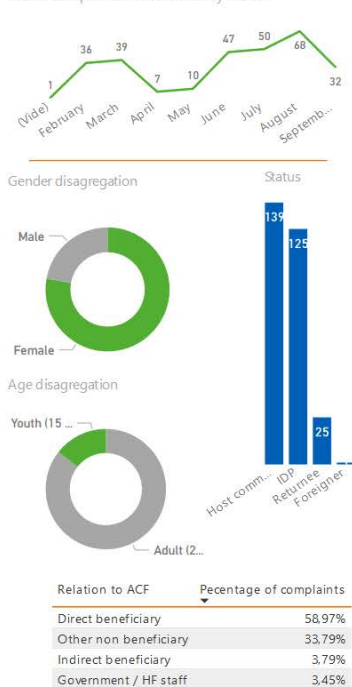
Remote, missions in Afghanistan & Senegal



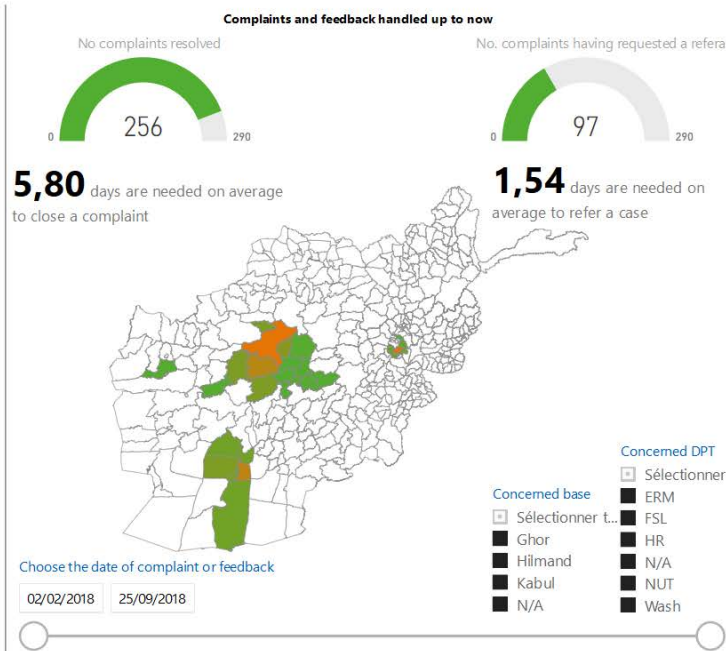
CartONG provided various Information Management support to Action Contre la Faim France in 2018. Our main support was dedicated to their Afghanistan mission where we deployed an expert for 3 weeks in October. The mission aimed at providing Information Management support to the team based in Kabul regarding digitization of some nutrition processes, data visualization with Business Intelligence tools, training sessions on various tools (Excel, Kobo, Sphinx and Power BI) and support on their data protection practices. Discover an example of what we produced right below.

Complaints and feedback mechanism dashboard*

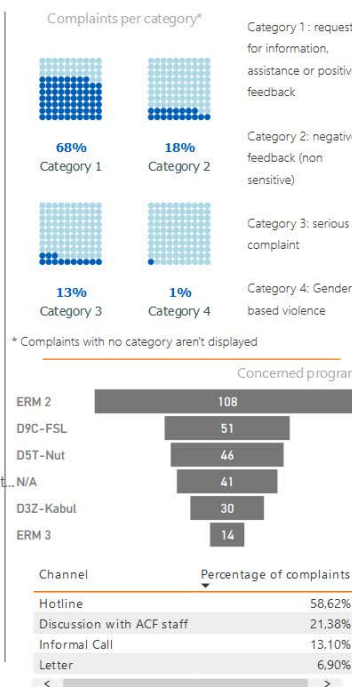
No. of complaints and feedback by Month



290



* This dashboard is based on fake data and to be used for communication purposes only



"CartONG played a big role [by transferring] its professional expertise and technical skills, and [by supporting] capacity building within the mission." *M&E Manager for ACF in Afghanistan*

In 2018, we also provided remote support to ACF France on Mobile data collection for their Nepal field operation, as well as gave a day of introduction to Geographical Information Systems during one of their regional training workshops in Dakar.

33 staff trained



OUR ACTIVITIES

Maps from here & abroad project



3 staff
Budget of 10,000€
France



La Fondation
de toutes les causes

Thanks to the support of the Fondation de France, CartONG launched in June 2018 the "Maps from here and abroad" project, seeking to create social interactions and exchanges between migrants and members of their host society through participatory and sensitive mapping activities.

In 2018, CartONG organized 8 participative mapping workshops better known under the name of "Mapathons". As part of this project, the format of the traditional mapathons was adapted to allow anyone who wishes to contribute to an international solidarity project to participate. Two-people teams, composed of a migrant and a host society member, were formed to create exchanges, foster the learning of digital tools, and promote experience sharing. Meanwhile, participative mapping workshops with migrant participants were also organized in Germany, via the MAMAPA project set up by a CartONG volunteer (see more details on page 34).

Sensitive mapping workshops were also organized as part of the project. This cartographic approach is based on a subjective, affective, imaginary and creative reading and representation of a delimited geographical space. A total of 9 workshops were organized between June and December 2018 allowing the participants to express their



"When you draw the map, you don't speak about your problems. You are alone with yourself and it helps you express things. The opening event was also good because it is necessary that everyone sees what we lived." A participant

perceptions of their homeland, their new environment in France, but also their migration routes through mapping. Following the workshops, an exhibition of maps was organized in Chambéry as part of the national festival Migrant' Scène in December 2018. Finally, a guide of good practices about sensitive mapping was published in October 2018 thanks to the contribution of three experts, specialists of the subject – see our Resources section for more details. Many other events and partnerships are planned for 2019 as well as the publication of a second guide of good practices.

10
partners

17
workshops

10 volunteers
mobilized all
year



OUR ACTIVITIES

GIS & MDC training for Bioforce



5 staff

Budget of 8,200€
Lyon and Dakar (Senegal)



CartONG has been supporting Bioforce since 2010. In 2018, we organized our first 5-day Mobile Data Collection training at the Bioforce Institute in Dakar (Senegal). At this occasion, staff from 6 countries – Niger, Central African Republic, Mali, Burkina-Faso, Cameroon & Guinea Conakry – and 5 humanitarian & development organizations were trained. CartONG also continued to provide

short training courses at the Bioforce Institute in Vénissieux for the WASH, Logistics and Project Management programs.

Key figure in 2018: 11 training workshops given.

Emergency Mapping for ACAPS



5 staff

Budget of 6,800€
Global



Since May 2017, CartONG has been supporting ACAPS, an independent humanitarian information provider which supports the aid community by providing up-to-date data on key crisis around the world. CartONG, in its capacity of humanitarian

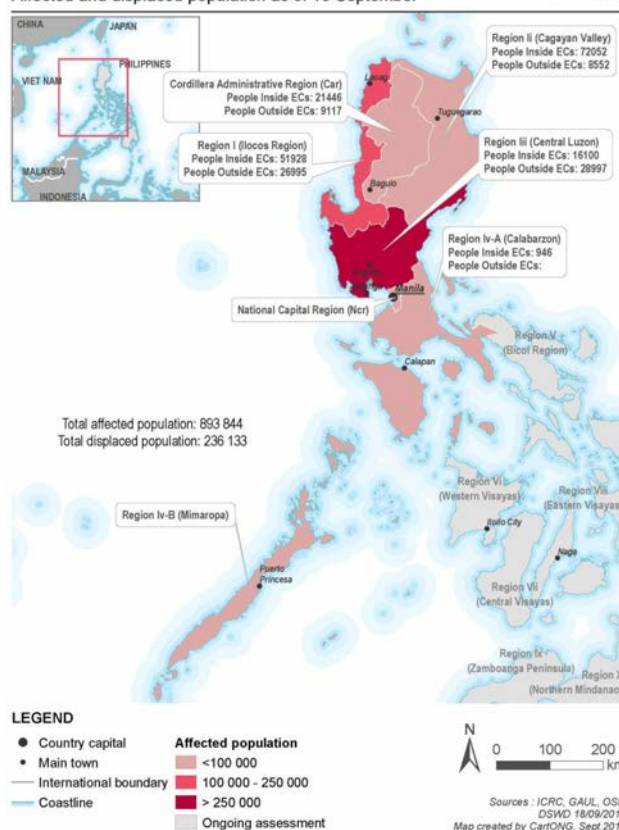
mapping specialist, has produced a significant number of the situation maps displayed in the "Briefing Notes" published by ACAPS and that complement and illustrate the bulletins by highlighting affected areas, hot spots or key figures of a crisis (see an example on the right).

The majority of those maps have to be delivered in rush mode, and are produced in a few hours. In 2018, CartONG supported ACAPS's mission for 6 displacements and refugee crisis (in Uganda, Syria, Afghanistan, Burundi, Democratic Republic of the Congo and Nigeria); at the occasion of 4 natural disasters (volcano eruption in Papua New Guinea, flood in Malawi, cyclone in Somalia and typhoon in The Philippines) ; in 3 contexts of outbreaks (Nigeria: Lassa Fever, Zimbabwe: Cholera, DRC: Ebola) and during the Venezuelan crisis in September.

Key figure in 2018: 16 maps produced in rush mode.

Philippines : Typhoon Mangkhut

Affected and displaced population as of 18 September



OUR ACTIVITIES

GIS support for ICRC



5 staff
Budget of 6,700€
Geneva



ICRC

CartONG has been supporting ICRC since 2010. In 2018, CartONG was activated to support the GIS team for a few months, working on 4 different projects. The first project entailed the creation and customization of a webmap using ArcGIS Online and geoform focusing on media monitoring and mapping violent events in Fortaleza, Brazil. The first step was to consolidate a database with OSM data and other external

sources on administrative boundaries and points of interest, then a web app was set up using geoform to directly fill the database of the hosted service. In addition, we also supported the adjustment of the mapbox styles for two base maps which became necessary as ICRC had migrated to a new online platform.

The second project was oriented towards web development of a plugin for exporting a web map in pdf. The plugin was already built by CartONG for another partner, and it was then improved and customized to meet ICRC's needs. It was implemented on an internal application showing the location of ICRC premises. In parallel, we worked on enhancing ICRC's online Archive Access Application. Apart from adjusting aspects linked to ordering from the Archive, the archive search functions were also augmented. In addition, CartONG compiled communication material working on icons and designing a flyer explaining GIS services available to ICRC's staff. It was a perfect occasion for our team to develop scripts for batch processing of icons.

Key figures in 2018: 4 forms coded & 100 of 350 icons improved or re-created.

MDC awareness-raising sessions for AFD



4 staff
Budget of 1,700 €
Paris, and remote support to
Cote d'Ivoire



CartONG has been supporting AFD since 2017. In 2018, a one-day awareness raising session was organized for AFD's Evaluation and Capitalisation division and Crisis and Conflict division on Mobile Data Collection. The session covered both an overview of the tools available and

examples of the different types of use cases, but also a presentation of all the stakes that mobile data collection can represent in the development sector. Beyond that, after a successful pilot implementation of Geopoppy in 2017 in Côte d'Ivoire with the Nitidae NGO, CartONG presented the project and the tool to AFD project managers.

Key figures in 2018: 14 staff trained on MDC, 20 staff having followed the Geopoppy demonstration.



OUR ACTIVITIES

Small staff & volunteer projects in 2018



In 2018, our teams also conducted small-scale projects in support of the following 3 organizations, and our volunteers implemented 2 projects in Germany and in South America.



Handicap International / Humanity & Inclusion

After having supported Handicap International in 2017 in the choice of the most relevant MDC tool for their needs, CartONG conducted in 2018 a benchmarking of two case management tools to help their HQ team in their comparison of SurveyCTO and Survey123 for different case management needs.

Institut Européen de Coopération et de Développement

A map was produced to help show the location of members of the MedNC network as well as display statistics from the International Labor Organisation.

Pays de Savoie Solidaire

We conducted in January 2018 a short training on mapping & GIS for Pays de Savoie Solidaire (the NGO in charge of the international cooperation of our local authority department) and a staff of their partner in Sénégal (Bignona). The skills acquired will be used to map forestry plans and define the priorities with the help of local communities.

MAMAPA

MAMAPA, Mannheimer Mapathons (Germany) launched by a member of our Board, began its activity on January 2018, and was officially registered in Germany on August 2018 as a charitable, non-profit association. MAMAPA consists in organizing mapathons in which German residents and immigrants map in tandem. The project is designed to promote the integration of newly arrived immigrants and refugees while simultaneously contributing to humanitarian mapping efforts. Over the course of the 8 mapathons organized in 2018, 49 immigrants from 18 different countries attended, each one participating on average twice. More than half are Syrian refugees, with a good number from Africa, other Asian nations and Latin America as well as a few Europeans. Almost all of the participants have reached the B1 German language level and quite a few are completing C1 in order to accede to university level studies.

Nomad Maps

We supported the initiative led by one of our volunteers, Alban Vivert, who launched a 6-month bicycle trip in South America around the theme of mapping, called Nomad Maps. During his travel across Colombia, Equator and Peru, he both mapped large areas on OpenStreetMap and photographed them on Mapillary, but also met the local OSM communities and raised awareness about his initiative and collaborative mapping. These various encounters might lead to new volunteer projects in the future!

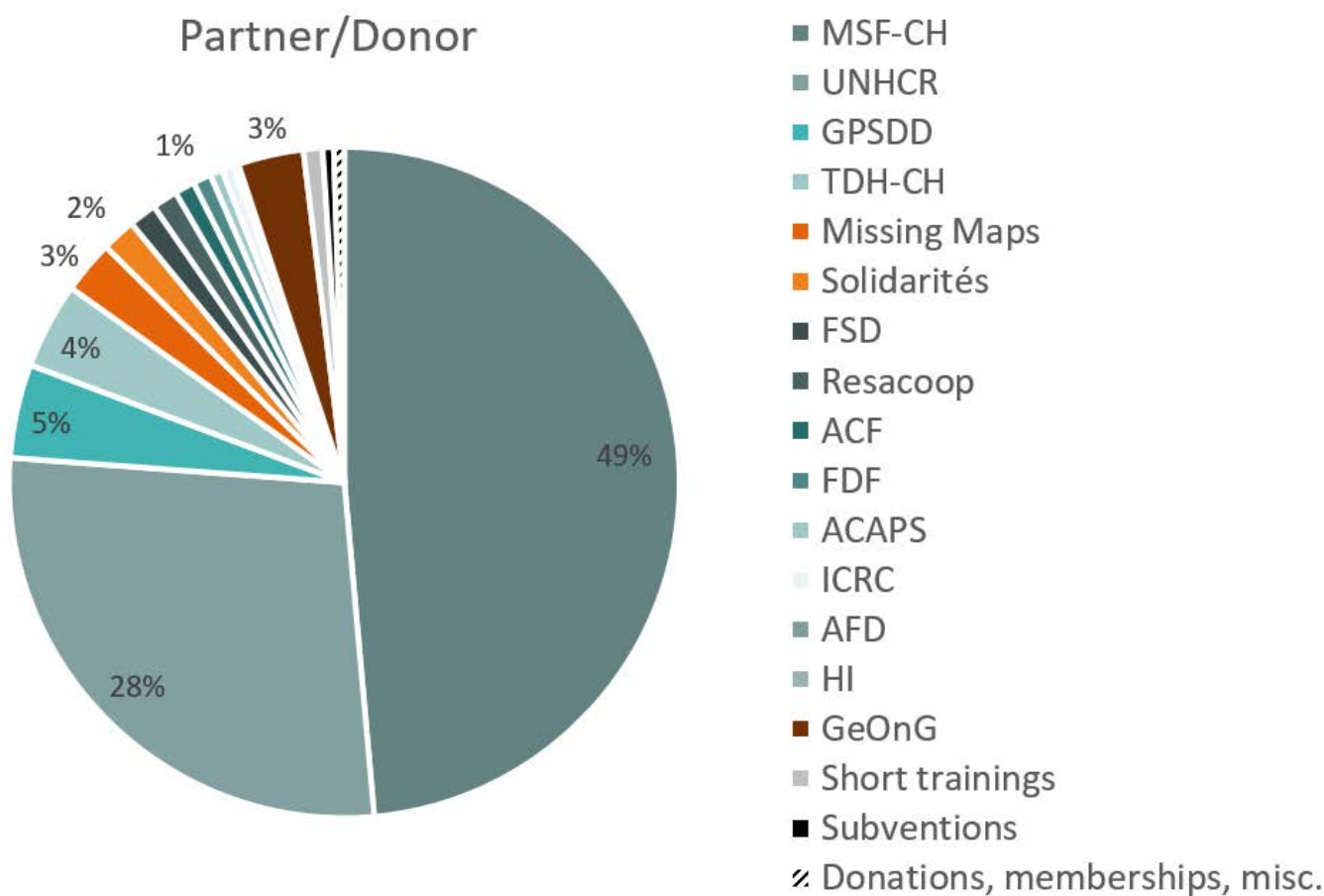


FINANCIAL REPORT

2018 ACCOUNTS

CartONG continued growing steadily in 2018, which allowed us to produce a positive balance on a similar level than last year, at 42,702€. This relatively high level will allow us to keep our level of security savings as well as continue investing on the future development of our organization (see next section).

CartONG's budget crossed for the first time in its history the million-euro threshold, with a total of 1,143,830€ (+34%).



We started working with a few additional partners and donors, but our main two partners still represent a very important part of our budget, with a strong increase of activities in support of UNHCR due to the partnership with a new division (DRS). This demonstrates once again the impact of our work with long-time partners and we will keep prioritizing their support; but it also does not undermine the need to diversify our revenue sources – a long-term objective that we will keep pursuing in the coming years.

Our budget remains by the most part funded by our humanitarian partners (85.9%) but we have managed to secure much more direct funding by public & institutional donors this year (6.8%) and corporate partner donations (2.2%). The remainder is coming from public subventions (0.5%), short training sessions (0.9%), individual donations and membership fees (0.3%), proceedings from the GeOnG event (3.2%) and miscellanea (0.3%).



FINANCIAL REPORT

Our expenses amounted to 1,101,128€. They were split between salaries & social charges and consultants (81.4% vs. 82.8% in 2017), equipment expenses (2.6% vs. 1.7%), office costs (2.5% vs. 1.8%), transport & mission fees (6.3% vs. 6.4%), insurance, bank & various fees (3% vs. 3.9%), taxes (1.7%, stable), amortization (1.3% vs. 1.1%), and event organizations costs for the 2018 GeOnG Forum (1.2%).

The repartition of the expenses remains therefore very stable. This year, we have in particular reinforced two fields of activity that were getting increasing requests: the web-development team with a full-stack developer and product owner, and the MDC team with 2 project managers and a specialist. We also recruited a coordinator for the Maps from here & abroad project and a part-time admin assistant. In total we now have 18 stable employees (inc. 7 permanent contracts), in addition to our interns (~3/year), service civique volunteers (~3/year) and regular consultants (4).

The turnover in the team remains relatively important with 4 employees who had to be replaced in 2018 because they moved on to new adventures but we maintain our effort to provide good working conditions and encourage stability in the team, since we believe this is the best way to uphold our quality-oriented values.

FEEDBACK ON THE INVESTMENT PLAN

The 2017 surplus of 47,410€, to be spent in 2018, was allocated to the following investments, based on the decision of CartONG's board:

- ⇒ 15,650€ to our security savings;
- ⇒ The 4,740€ allocated to volunteer projects (call for projects & minor daily expenses) weren't spent this year for lack of time to organize the call for ideas;
- ⇒ The 27,020€ for general investments had been spent mostly on the new HQ office (27,660€ for the realtor, construction work, furniture, etc. as well as salaries spent on it for the work done directly by the team), and on investment to start the data protection project (735€), totaling a slight overspending of 1,375€.

The long-term security savings of CartONG therefore amount a total of 145,670€, and 4,240€ will be available on top of the new budget for next year's volunteer projects call for ideas.

Our complete financial report compiled by our accountant is available for partners & donors, contact us at info@cartong.org to receive a copy.



PERSPECTIVES FOR 2019

BUDGET

As usual, CartONG's board has adopted a rigorous planned budget for 2019, for a total of 1,065,600€ (expenses & incomes), a slight decrease from 2018 that will most likely be compensated by unforeseen new projects acquired over the course of the year.



The expected breakdown of expenses is relatively similar, with a higher proportion on salaries & consultants (87.3%) compared to mission & equipment (5.4%) and office & other costs (7.2%) than 2018, partly due to the conservative estimate.

INVESTMENTS

CartONG has decided for 2019 the following investments with the surplus from 2018:

- ⇒ 14,090€ will be allocated to our security savings;
- ⇒ 4,270€ will be for volunteers' projects, and, in particular, 8,010€ (including the unspent budget reported from last year) which will be available to relaunch our "call for ideas" initiative to kick start new volunteer activities;
- ⇒ 23,340€ will be for general investments, the main part being dedicated to the significant internal investment we are undertaking to reinforce our processes and tools as to ensure better data protection practices for our activities (see next section).



PERSPECTIVES FOR 2019

PROJECTS

The following key projects are foreseen for 2019:

- ⇒ The partnership with MSF will continue, supporting in particular the major scale-up of their GIS infrastructure undertaken as part of the GEOMSF program;
- ⇒ The partnership with UNHCR will also continue, both on regular support to their MDC & IM activities (PHS and DRS sections) but also with a revitalized work on the site mapping (FICSS section);
- ⇒ We will continue to support Terre des Hommes on MDC & IM activities;
- ⇒ We will start a new project to support the Tunisian public agency ARRU for the impact evaluation of a national urban rehabilitation project, with a funding by the French Development Agency, with components of GIS capacity building, open data and OpenStreetMap;
- ⇒ We will pursue our participation to the Missing Maps project, in particular with a volunteer field mission planned in Burkina Faso;
- ⇒ We will finalize the first phase of the Maps from here & abroad project, as well as finish implementing the Educ'AURA project;
- ⇒ We will continue delivering training sessions at the Bioforce humanitarian school, provide emergency maps to ACAPS and other smaller projects.

CROSS-CUTTING ACTIVITIES

- ⇒ CartONG will receive a co-funding from the Institutional and Organization Reinforcement Fund (FRIO) from the French coalition of NGOs "Coordination Sud" which is supported by the French Development Agency in order to reinforce its capacities in terms of data protection, in particular concerning the beneficiaries' data we process for or with our partners. This structuring activity will be co-funded by our core funds and will allow us to improve our data protection practices, to better advise our partners on the subject, to create mutualized knowledge on the topic, and hopefully to foster better practices at the sector level;
- ⇒ CartONG will start a collaborative effort to create a "Projet Associatif", a document summarizing our values, fields of expertise and objectives, in order to define a shared and updated vision of our future with the support of our board, staff and volunteers;
- ⇒ CartONG will recruit a second admin officer, which will allow us to improve internal processes and, in particular, give greater support to staff being deployed, since we are facing an increasing number of field missions requests from diverse partners and for a wider range of contexts;
- ⇒ We will use this year which does not include organizing a GeOnG Forum, to continue structuring our communications: the new template of this annual report being one of the first expected result of such efforts!



ACKNOWLEDGMENTS

CartONG wishes to thank all of the organizations that supported and accompanied its projects and initiatives in France and abroad in 2018, namely:

510.global	Global Partnership for Sustainable Development Data	La Turbine (Ex "La péniche")
Abendakademie	Goethe Institute	Les Petits Débrouillards AuRA
ACAPS	Handicap International	Ludwigshafen City Library
Action Contre la Faim France	Hydraulique Sans Frontières	Maison des solidarités locales et internationales (Lyon)
Agence Française de Développement	Institut Bioforce	Mannheimer Abendakademie
Aurore	Institut Européen de Coopération et de Développement	Missing Maps
BASF SE Ludwigshafen	International Committee of the Red Cross	MJC Berriat Grenoble
Bibliothèques Sans Frontières	Internationaler Bund	MSF Switzerland
Centre Culturel Œcuménique de Villeurbanne	Karya	OSM RDC
Centre d'Accueil pour Demandeurs d'Asile de Montmélian	L'association Départementale pour le Développement et la Coordination des Actions auprès des Étrangers de la Savoie	OSM Madagascar
Centre d'hébergement d'Urgence d'Ivry-sur-Seine & Nanterre	L'Institut français des sciences et technologies des transports, de l'aménagement et des réseaux de l'Université Paris-Nanterre	Pays de Savoie Solidaire
Ministère de la Santé Publique de RDC	L'Institut Handicap International pour l'action humanitaire	Pompiers Humanitaires Français
Ecosur	L'Université Paris - Nanterre	PRIR de Montmélian
Espace Larith de Chambéry	La maison des solidarités locales et internationales de Lyon	Programme Solidarité Eau
Fédération des œuvres laïques de Savoie - Ligue de l'enseignement de Savoie & Haute-Savoie		Resacoop
Fondation de France		SINGA Lyon et Grenoble
Frame Voice Report (UE)		Solidarités International
		Fondation Terre des hommes
		UNHCR

AND OF COURSE, THE WARMEST THANKS TO ALL
OF OUR VOLUNTEERS!



CartONG

23 Boulevard du Musée – 73000 Chambéry, France

+33 4 79 26 28 82



THANK YOU TO ALL OF OUR MEMBERS, VOLUNTEERS & PARTNERS

Follow our projects & find more resources on

www.cartong.org

blog.cartong.org

